

25% DESIGN
DEVELOPMENT

NOT FOR CONSTRUCTION

READING
HIGH SCHOOL
READING, MA

Designpartnership
OF CAMBRIDGE INC

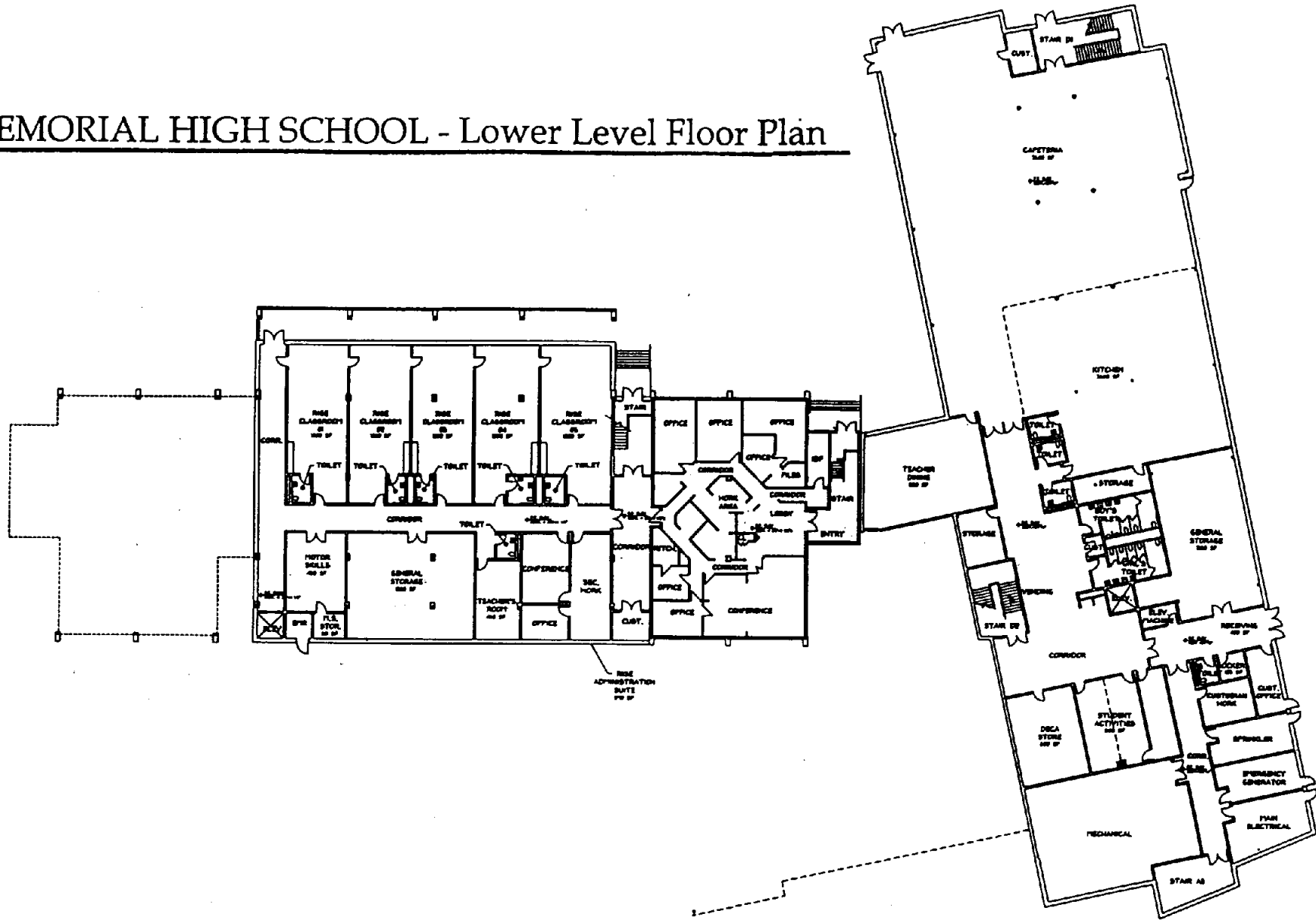
HOOD BUSINESS PARK
500 RUTHERFORD AVENUE
CHARLESTOWN, MA 02129
T 617.241.9800, F 617.241.5143
www.dpdc.com

ARCHITECTURE
PROGRAMMING
MASTER PLANNING
INTERIOR DESIGN

SITE PLAN

READING MEMORIAL HIGH SCHOOL - Lower Level Floor Plan

May 23, 2003



SCALE: 1"=40'

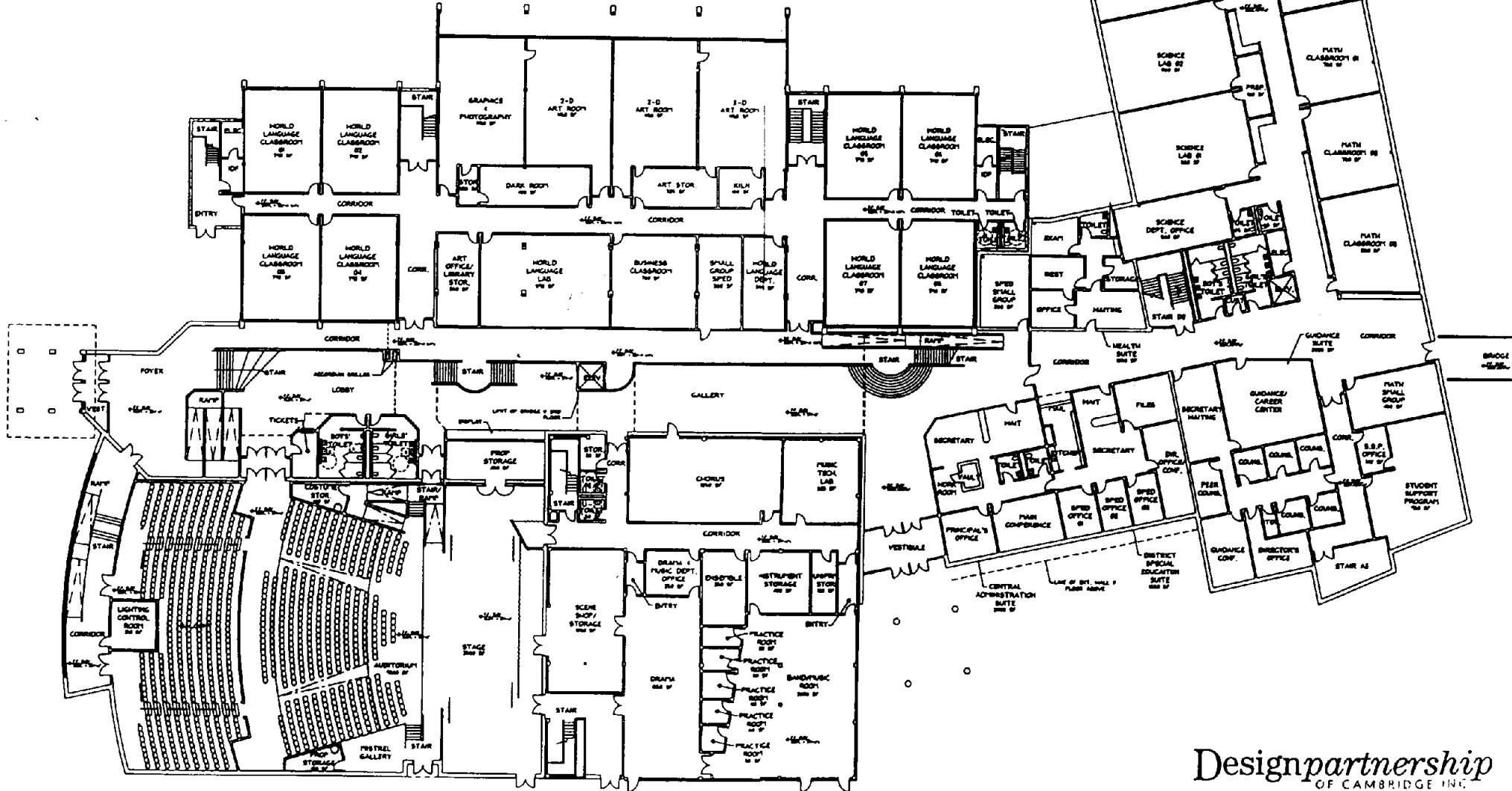
Designpartnership
OF CAMBRIDGE INC.

HOOD BUSINESS PARK
500 RUTHERFORD AVENUE
CHARLESTOWN, MA 02129
T 617.241.9800, F 617.241.5143
www.dpc.com

ARCHITECTURE
PROGRAMMING
MASTER PLANNING
INTERIOR DESIGN

READING MEMORIAL HIGH SCHOOL - First Level Floor Plan

May 23, 2003



SCALE 1/4"=1'-0"

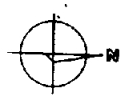
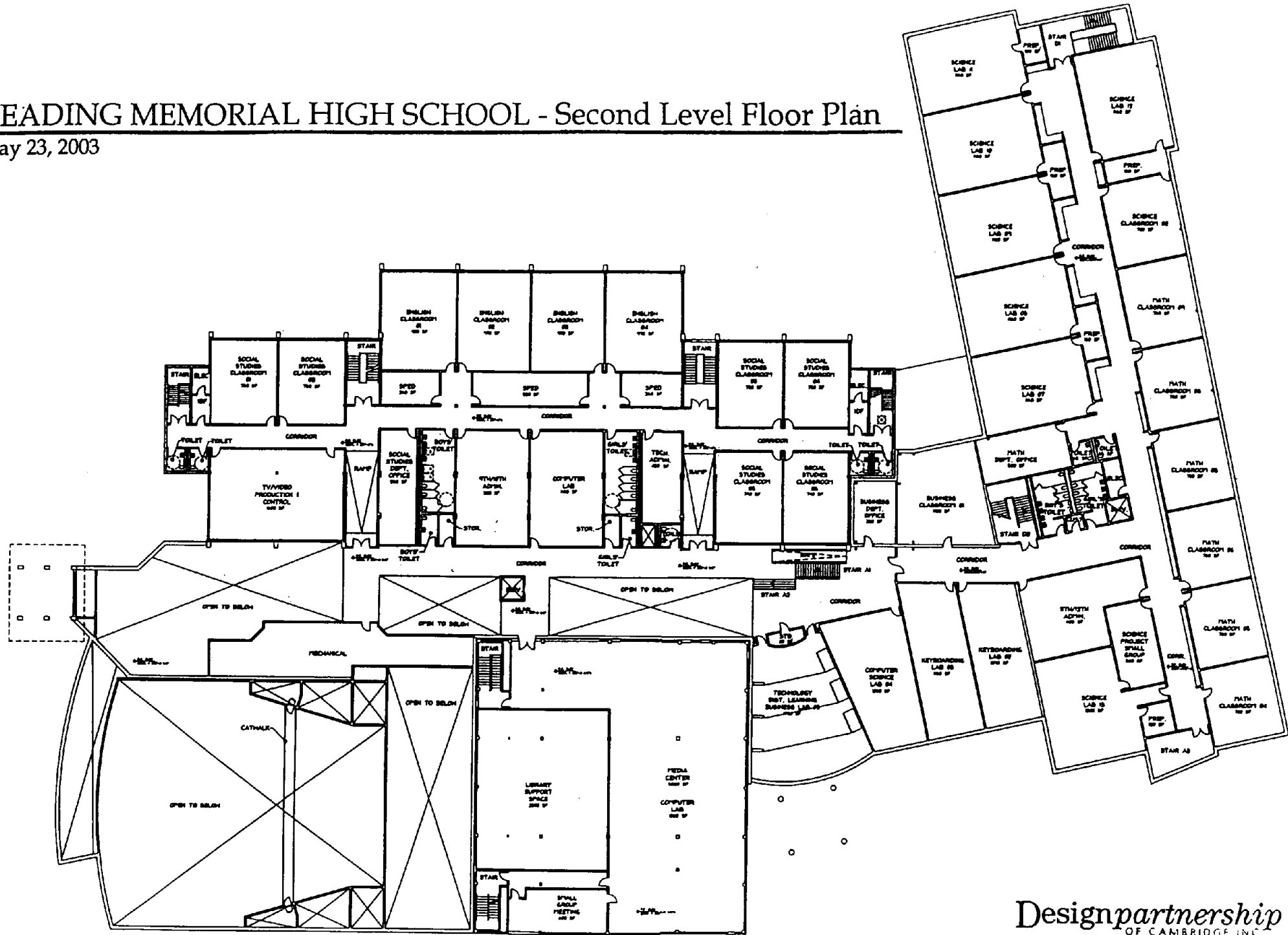
Designpartnership
OF CAMBRIDGE INC.

HOOD BUSINESS PARK
500 RUTHERFORD AVENUE
CHARLESTOWN, MA 02129
T 617.241.9800, F 617.241.5143
www.ldpc.com

ARCHITECTURE
PROGRAMMING
MASTER PLANNING
INTERIOR DESIGN

READING MEMORIAL HIGH SCHOOL - Second Level Floor Plan

May 23, 2003



SCALE 1/4" = 1'-0"

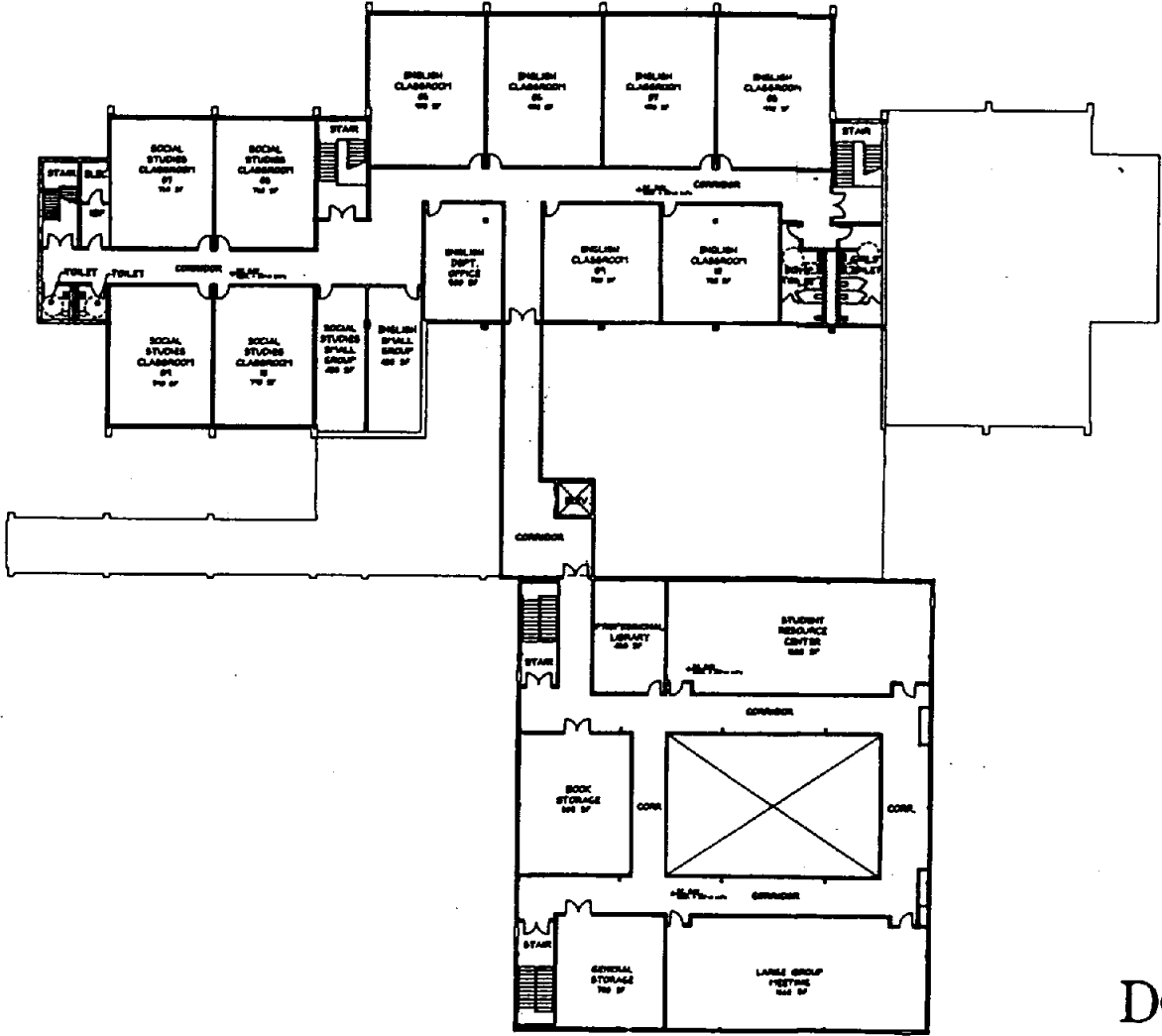
Designpartnership
OF CAMBRIDGE INC.

HOOD BUSINESS PARK
500 RUTHERFORD AVENUE
CHARLESTOWN, MA 02129
T 617.241.9800, F 617.241.5143
www.dpc.com

ARCHITECTURE
PROGRAMMING
MASTER PLANNING
INTERIOR DESIGN

READING MEMORIAL HIGH SCHOOL - Third Level Floor Plan

May 23, 2003



SCALE: 1"=40'

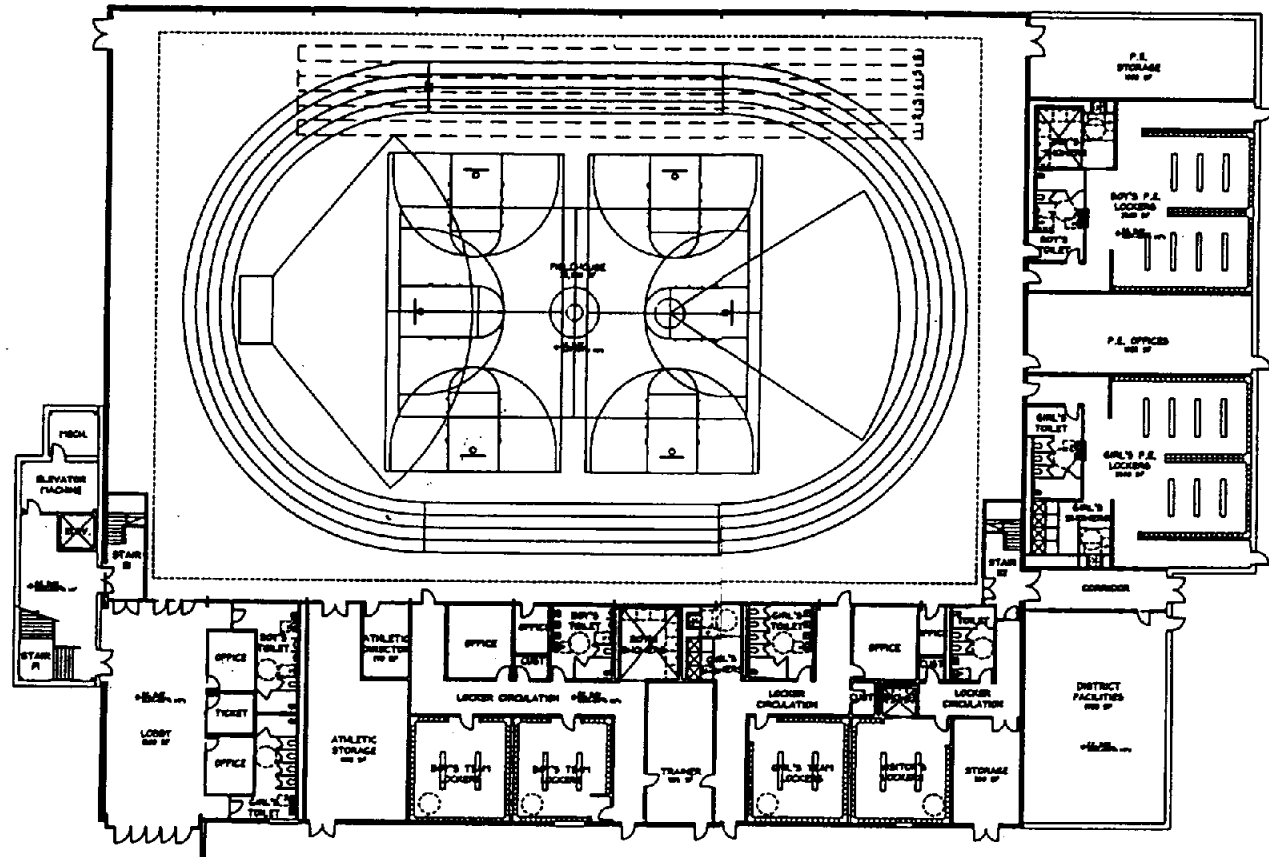
Designpartnership
OF CAMBRIDGE INC

HOOD BUSINESS PARK
500 RUTHERFORD AVENUE
CHARLESTOWN, MA 02129
T 617.241.9800, F 617.241.5143
www.tdpc.com

ARCHITECTURE
PROGRAMMING
MASTER PLANNING
INTERIOR DESIGN

READING MEMORIAL HIGH SCHOOL - Fieldhouse Lower Level Floor Plan

May 23, 2003



SCALE: 1" = 40'

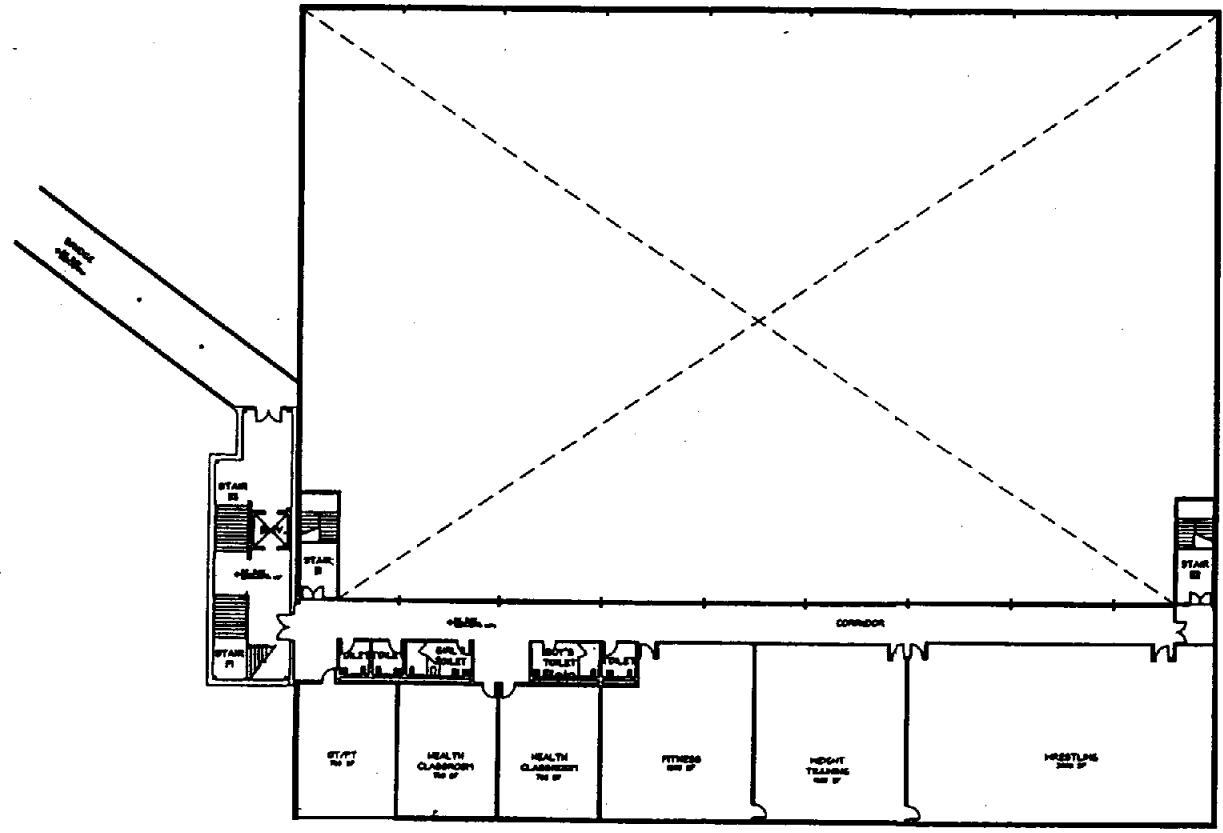
Designpartnership
OF CAMBRIDGE INC

HOOD BUSINESS PARK
508 RUTHERFORD AVENUE
CHARLESTOWN, MA 02129
T 617.241.9800, F 617.241.5143
www.dpc.com

ARCHITECTURE
PROGRAMMING
MASTER PLANNING
INTERIOR DESIGN

READING MEMORIAL HIGH SCHOOL - Fieldhouse First Level Floor Plan

May 23, 2003



Designpartnership
OF CAMBRIDGE INC.

HOOD BUSINESS PARK
598 RUTHERFORD AVENUE
CHARLESTOWN, MA 02129
T 617.241.8800, F 617.241.5143
www.idpc.com

ARCHITECTURE
PROGRAMMING
MASTER PLANNING
INTERIOR DESIGN